

Quick Start

New in 3.0

Focus On:

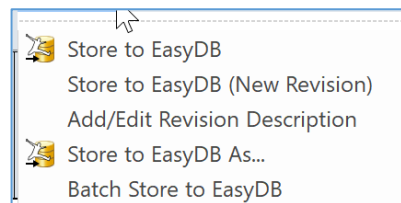
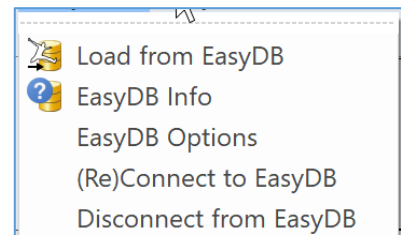
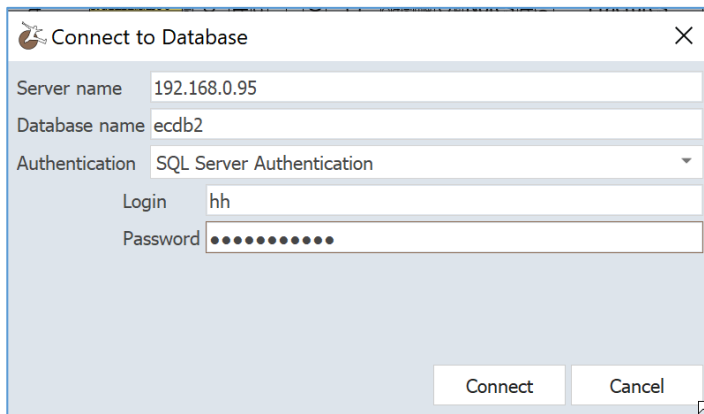
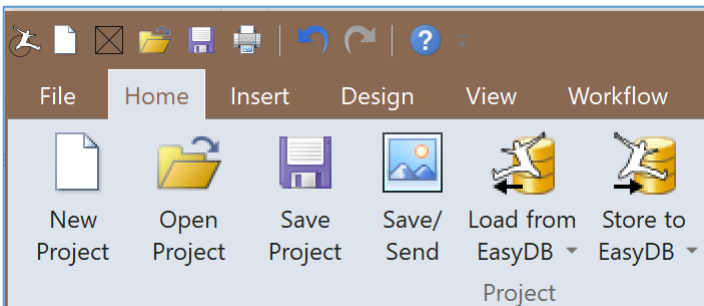
Data availability and integration



The EasyCore database - EasyDB

To benefit from the EasyCore database, EasyDB you need to have a running SQL server. Please request instruction document for integrating your SQL server with EasyDB by sending an e-mail to sales@myeasycopy.com. Following these guidelines will set your SQL server up to allow EasyCore access.

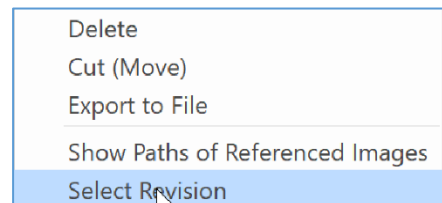
When your SQL server has been set up you will have the possibility to store and load EasyCore projects and images to and from a generic SQL database. In the EasyCore Home tab, you find the access.



Load

Loading projects from EasyDB will offer a fast track to your projects and images. Click to get a preview of an image or a project or double click to open the project. When right clicking on a selected project from EasyDB you have the following options:

- Delete, will prompt you for typing "delete"
- Cut (Move), will prompt you for typing "move" when pasting the item in a new location
- Export to File – Select a folder where you like to have an .ecprjz file
- Show Paths of Referenced Images will let you know where images used in the specific project are located. (More projects can use the same images)
- Select Revision - is a back up option to retrieve previous versions of the same project



Store

Storing your projects in EasyDB will open the doors to SQL queries for easy access to data across projects.

A long list of file formats are supported in EasyDB. With the Batch Store option you can store a complete folder, with project file, core photos, thin sections, las files, .doc, .xlxs and much more, to have all your files related to a project available from the same File Table folder in File Explorer.

Search

Having the EasyCore projects stored in EasyDB you will be able to search for project **Names**.

To guide you towards the match in the **Metadata** you will see it high-lighted.

Searching for **Data**, will offer a depth indication of the match, when a project is being previewed.

The image displays three overlapping screenshots of the 'Load Project from Database' application interface. The top-left screenshot shows a search for 'demo' with filters for Name, Metadata, and Data. The top-right screenshot shows a search for '2022' with filters for Name, Metadata, and Data, and a 'Well Info' panel on the right. The bottom-left screenshot shows a search for 'fish remains' with filters for Name, Metadata, and Data, and a 'Reference View' panel at the bottom left.

Well Info

Well Name & No.	
Unit	Meters
Top	100 m
Bottom	200 m
Operator	
Operator Logo	
Application Logo	EasyCore
Country	Denmark
Location	
EasyDB Id	{364741ae-af96-11ec-9233-e8f4}
EasyDB Last Commit by:	hh
EasyDB Last Commit Time:	Tue Mar 29 19:09:53 2022 GMT

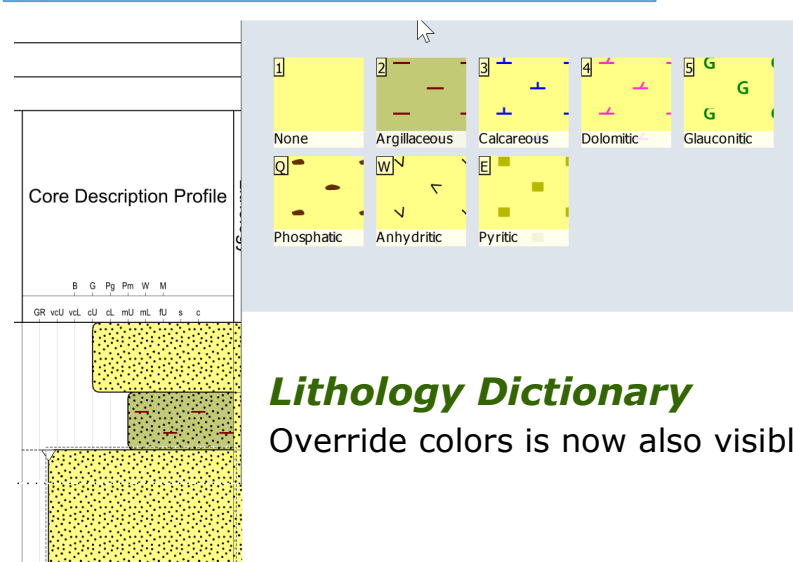
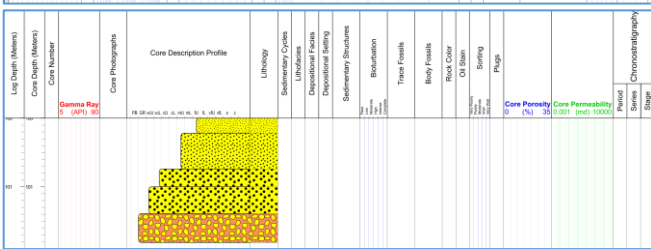
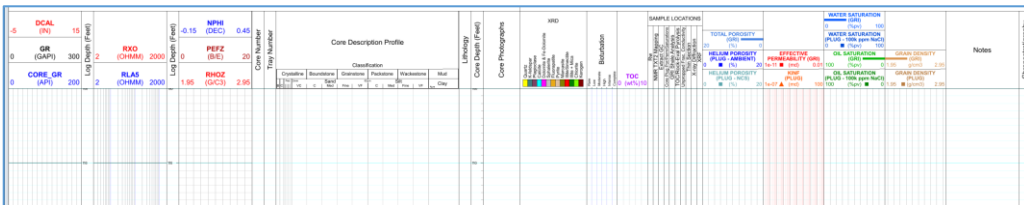
Reference View

100	
105	

Templates

You have now got 3 different installed Project Templates, depending on your need and focus. These are intended for inspiration or a starting point for your own templates.

- A basic template
- An advanced log display template
- A detailed grain size pattern

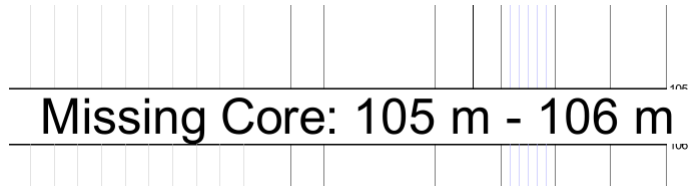


Lithology Dictionary

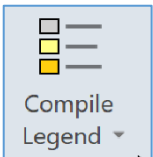
Override colors is now also visible in the Wizard

Gaps

You can now change the text in the Gaps dialog (Design Tab) to an alternative text like "Missing Core", "Missing Sections" etc.



Compile Legend



Look for the new icon. You will also now get a warning if your Legend has not been updated/compiled upon printing or saving as PDF or other formats.

Dialogs

Within a session all dialogs remain the same size, after resizing it to match the needed size.

Sample Numbers

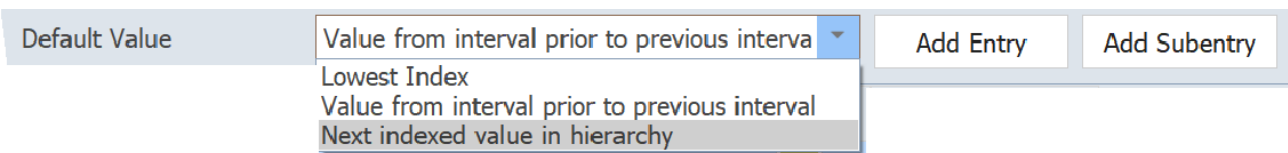
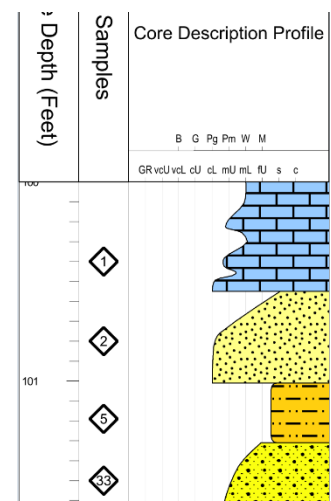
For plugs and other samples you have the Sample Number column option if you need to include a number to the samples.

Chrono Stratigraphy

Is now totally customizable and have been updated with the latest corrections.

Text & Fill -> Name & Index Intervals

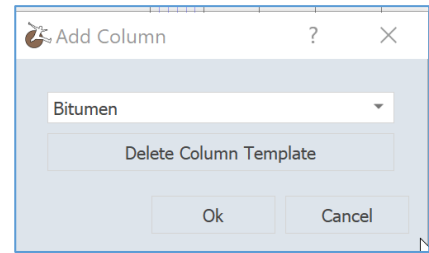
Text & Fill columns is now called Name & Index Interval columns. We have added a hierarchical option for all these interval columns. You can add Entry and Subentry and select default value.



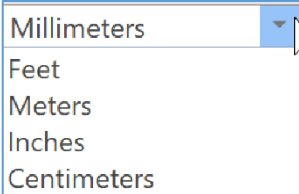
Patterns used in Text & Fill columns can have transparent background if columns are overlaid.

Column Templates

In the Add Column dialog Column Templates can now be deleted from the GUI.



Depth Column



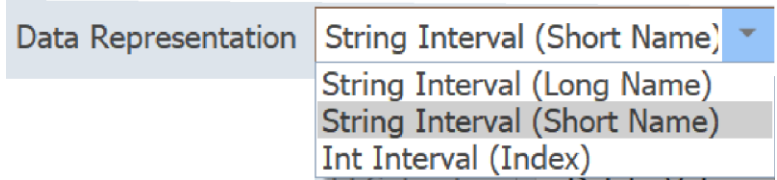
Smaller units have been allowed. Depth can be measured in mm and inches for detailed description in smaller depth ranges.

Layout

If you are having multiple layouts in your Template, changing the visual data representation, (color changes, additional values, name changes etc.) in one layout will offer to synchronize columns across layouts.

Data Representation

Name & Index interval columns can have different data representation. This is relevant for data import and export.



In customize menu select the data representation for the column(s) matching the input data (Import Project Data) or output data (Export Project Data).

Data Import

Data can now be imported as Long Name, Short Name or Index.

Importing data from XLSX with one sheet per data set, you can insert data defined with 1) A top depth and 2) A bottom depth

column and 3) A column with for instance the data map name: Lithofacies, with values entered as Short Names. In this case you should set the data representation in the Lithofacies column to match your imported data (if it is not already matching your data).

Long Name	Short Name	Index	Color
None	None	0	
Low concentration turbidites	LCT	1	Yellow
High concentration turbidites	HCT	2	Magenta
Traction deposits	TRAC	3	Cyan

www.myeasycopy.com

The EasyCopy Company ApS
Carolinevej 3
3300 Frederiksvaerk, Denmark

AGI Inc. – The EasyCopy Company
650 W. Bough Lane, Suite 150-117
Houston TX 77024, USA